



Sello Roxtec RS Ex con SL RS

Sello con calificación Ex para soldadura, diseñado para un solo cable o tubería.

El Roxtec RS Ex con SL RS es un sello con calificación apta para zonas Ex e y Ex tb. Cuenta con un collarín de metal y está diseñado para un solo cable o tubería. The entry seal has two halves with removable layers making it adaptable to cables and pipes of different sizes. The sleeve is welded to the structure.



- Resistente a roedores
- Rápido y sencillo de instalar

Características del producto



Calificación contra incendios



Estanco al agua



Estanco a gases



Clasificación Ex

Estructura de instalación



Metal

Tipo de montaje



Soldadura

Calificaciones y certificados

Fuego

- CLASE A de acuerdo al estándar FTP IMO 2010
- CLASE H según el Código IMO 2010 FTP + curva de carga de fuego HC
- Ráfagas de fuego según ISO 22899-1 y OTI 95634

Estanquidad

- Gas: 2,67 bar (catastrófico)
- Agua: 4 bar (catastrófico)

Soportes

- Clasificación Ex

Datos de los componentes de sellado

Componentes de sellado



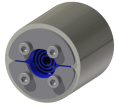
Kit RS W Ex

Para obtener información detallada, visite [roxtec.com](https://www.roxtec.com).

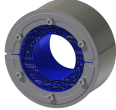


Kits de sellos preconfigurados

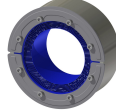
mm/kg



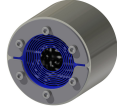
RS 25 W Ex AISI316/PRIMED



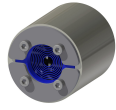
RS 125 W Ex AISI316 WOC/PRIMED



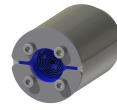
RS 150 W Ex AISI316 WOC/AISI316



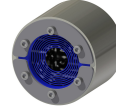
RS 75 W Ex AISI316/AISI316



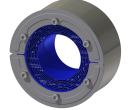
RS 50 W Ex AISI316/AISI316



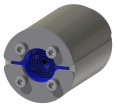
RS 43 W Ex AISI316/AISI316



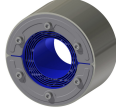
RS 75 W Ex AISI316/PRIMED



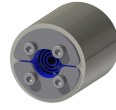
RS 125 W Ex AISI316 WOC/AISI316



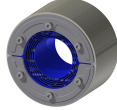
RS 43 W Ex AISI316/PRIMED



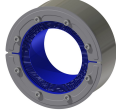
RS 100 W Ex AISI316 WOC/PRIMED



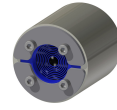
RS 25 W Ex AISI316/AISI316



RS 100 W Ex AISI316 WOC/AISI316



RS 150 W Ex AISI316 WOC/PRIMED



RS 50 W Ex AISI316/PRIMED

Título	Configuración	Dimensiones de abertura Ø	Peso	N.º de art.
RS 100 W Ex AISI316/AISI316			2.3	EXRSW1000002121
RS 25 W Ex AISI316/PRIMED	1x (3.6-12.0)	25 - 26	0.17	EXRSW0250002112
RS 125 W Ex AISI316 WOC/PRIMED	1x (66.0-98.0)	125 - 127	2.9	EXRSW0125102112
RS 150 W Ex AISI316 WOC/AISI316	1x (93.0-119.0)	150 - 152	3.2	EXRSW0150102121
RS 100 W Ex AISI316/PRIMED			2.2	EXRSW1000002112
RS 75 W Ex AISI316/AISI316	1x (24.0-54.0)	75 - 77	1.5	EXRSW0750102121
RS 50 W Ex AISI316/AISI316	1x (8.0-30.0)	50 - 52	0.9	EXRSW0500002121
RS 43 W Ex AISI316/AISI316	1x (4.0-23.0)	43 - 45	0.6	EXRSW0430102121
RS 75 W Ex AISI316/PRIMED	1x (24.0-54.0)	75 - 77	1.5	EXRSW0750002112
RS 125 W Ex AISI316 WOC/AISI316	1x (66.0-98.0)	125 - 127	3.2	EXRSW0125102121
RS 43 W Ex AISI316/PRIMED	1x (4.0-23.0)	43 - 45	0.6	EXRSW0430002112
RS 125 W Ex AISI316/PRIMED			3.2	EXRSW1250002112
RS 125 W Ex AISI316/AISI316			3.2	EXRSW1250002121
RS 100 W Ex AISI316 WOC/PRIMED	1x (48.0-70.0)	100 - 102	2	EXRSW0100102112
RS 25 W Ex AISI316/AISI316	1x (3.6-12.0)	25 - 26	0.24	EXRSW0250002121
RS 100 W Ex AISI316 WOC/AISI316	1x (48.0-70.0)	100 - 102	2.3	EXRSW0100102121
RS 150 W Ex AISI316 WOC/PRIMED	1x (93.0-119.0)	150 - 152	3.2	EXRSW0150102112
RS 50 W Ex AISI316/PRIMED	1x (8.0-30.0)	50 - 52	0.9	EXRSW0500002112

The product information provided by Roxtec does not release the purchaser of the Roxtec system, or part thereof, from the obligation to independently determine the suitability of the products for the intended process, installation and/or use. Roxtec gives no guarantee for the Roxtec system or any part thereof and assumes no liability for any loss or damage whatsoever, whether direct, indirect, consequential, loss of profit or otherwise, occurred or caused by the Roxtec systems or installations containing components not manufactured by an authorized manufacturer and/or occurred or caused by the use of the Roxtec system in a manner or for an application other than for which the Roxtec system was designed or intended. Roxtec expressly excludes any implied warranties of merchantability and fitness for a particular purpose and all other express or implied representations and warranties provided by statute or common law. User determines suitability of the Roxtec system for intended use and assumes all risk and liability in connection therewith. In no event shall Roxtec be liable for indirect, consequential, punitive, special, exemplary or incidental damages or losses. The Roxtec products are offered and sold in accordance with the conditions of the Roxtec General Terms of Sales. The latest version of the Roxtec General Terms of Sales can be downloaded from <https://www.roxtec.com/en/about-us/about-roxtec/general-terms-of-sales/>. We reserve the right to make changes to the product and technical information without further notice. Any errors in print or entry are no claims for indemnity. The content of this publication is the property of Roxtec International AB and is protected by copyright. This document was generated on: 2024-04-23